

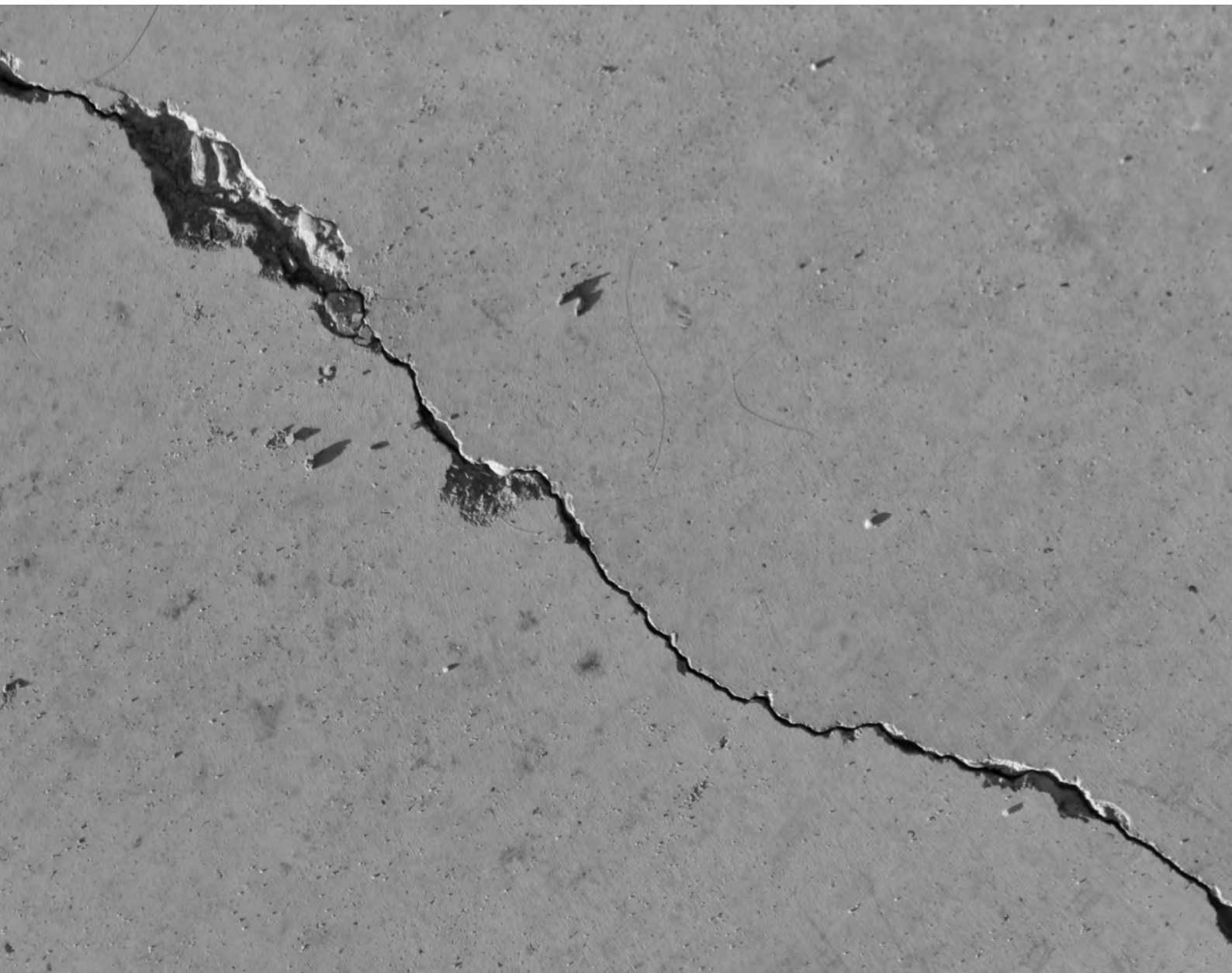
TECHNICAL DATA SHEET

# 321 EPOXY INJECTION RESIN

Designed to prime, seal and waterproof cracks and seams

## DESCRIPTION

Rockbond 321 Epoxy Injection Resin (RB 8.06) is a solvent free, low viscosity, two component, rapid curing epoxy resin system specifically formulated for concrete crack repair. RB 8.06 is slightly thixotropic to resist resin drainage on vertical surfaces. This product is ideal for the repair of structural cracks in both new and old concrete structures, restoring structural integrity.





## SPECIAL PROPERTIES

- Designed to prime, seal and waterproof cracks and seams.
- Flowable, penetrating and solvent free.
- Slightly thixotropic to resist resin drainage on vertical surfaces.
- Shrinkage free hardening.
- Excellent adhesion to most substrates.
- Rapid curing.

## MIXING RATIO

Mixing by Volume:

100 parts RB8.06R with 29 parts RB8.06H

***i.e. 100ml RB 8.06R with 29ml RB 8.06H***

Mixing by Weight:

100 parts RB8.06R with 25 parts RB8.06H

***i.e. 100grams RB 8.06R with 25grams RB 8.06H***

Note: Care should be taken to when dispensing and mixing. Optimum results are achieved when recommended ratios are used.

## MIXING INSTRUCTIONS

Pour a measured amount of resin into a suitable container. Add the appropriate amount of hardener to the resin and mix thoroughly until the mixture is clear and streak free.

## PACKAGING OPTIONS

<b>RB 8.06R</b>	<b>RB 8.06H</b>
4KG	1KG
20KG	5KG
200KG	20KG
	200KG

## STORAGE

321 Epoxy Injection Resin will keep for two years if kept in original containers at room temperature and out of direct sunlight. Containers should be tightly sealed to prevent moisture absorption.

## HEALTH AND SAFETY

- Use with good ventilation and adequate safety equipment including gloves.
- If skin contact occurs, wash with lanolin based hand cleaner and water.
- If eye contact occurs, immediately wash for 15 minutes with running water.
- If swallowed:
  - Resins - Do not induce vomiting, and contact doctor or Poisons information Centre.
  - Hardners - Do not induce vomiting, give plenty of water or milk and contact a doctor.
- 321 Epoxy Injection Resin should not be ingested; in an unlikely event it is ingested see your nearest physician immediately.

## TECHNICAL DATA

<b>Pot Life 100g @ 20°C:</b>	25-35mins
<b>Thin Film @ 20°C:</b>	120-140mins
<b>HDT after 7 days:</b>	50°C
<b>Ultimate HDT:</b>	70°C
<b>Shore D Hardness:</b>	79
<b>Tensile Strength:</b>	75-83MPa
<b>Compressive Strength:</b>	69 MPa
<b>Elongation:</b>	4%
<b>Flexural Strength:</b>	110MPa

## TECHNICAL INFORMATION

Should you have any queries, or require further information, please contact our **Technical Sales Team: +64 4 568 5401**

**ONLINE SUPPORT** [www.rockbond.co.nz](http://www.rockbond.co.nz) | **FREEPHONE** 0800 76 25 26 | **EMAIL** [sales@rockbond.co.nz](mailto:sales@rockbond.co.nz)

Rockbond SCP Ltd provides the above information in good faith and without warranty. The data represents typical values which can be updated at any time, and this information supersedes previous issues. No liabilities can be accepted for any damage or loss arising from the use of Rockbond SCP Ltd literature or its products, because Rockbond SCP Ltd has no continuous control on how the materials are mixed, placed or cured.

**ROCKBOND**  
MAKING CONCRETE STRONGER