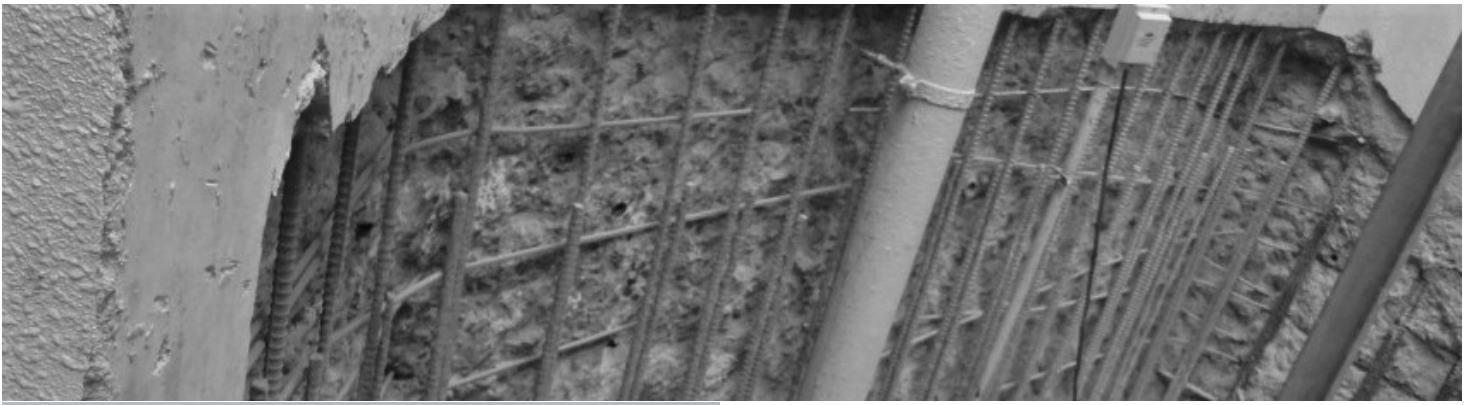


DESCRIPTION

5 RFNERQG3UIPHUIRU6HO5SUHPLXGUHDGXDFULFPRGLILHGSRHUXGXSURFX
XHHOHQRUFQJ7KHXPFRQQLQXQLTXHEOHQGRILQH3RUQDQGDQGOLFURXOLFDFHPHQXQDFUOLFFR
SROPHUSRGHU DQG D XQLRQ RI FRPSDEOH DGPLXUHXKH SRGHU DORFRQLOSRXUIXO FRUURRQ
LQKIELXU7 KHPDXULDOXH QPLXG X XDXU DQG SDLQXGRQXHO UHLQIRUFQJ SURGXFHQDQ HODX
DNDLQFRDXQLFKXOOSURFXHXHODJDLOXRUURRQDQGFKHPLFDODXFN7KHSRQHULXDFNDJHG
LQ NJDQG NJSDXFE XFNHXQGDXXHOIOLIHRXDUX



SPECIAL PROPERTIES

- Specially formulated for the protection of steel reinforcement.
- Quick and simple to mix and apply.
- Portland cement based, acrylic modified and microsilica enhanced.
- Provides an elastic alkaline protective coating to steelwork.
- The coating bonds fast to steel and is impermeable.
- Contains the latest anti-corrosion technology – the corrosion inhibitors will migrate to corroded steel, re-passify and protect.
- Compatible with all Rockbond products
- Contains no chlorides, ferrous metal or other deleterious substances.
- Economical, non-toxic, user friendly and safe to use.

USES

- Brush or spray applied onto steel reinforcing to protect the steel against chlorides, moisture, oxygen and acid gases.
- To chemically passify steel in chemically aggressive environments.
- To protect steel against de-icing salts and in marine locations.
- For reinforced concrete repairs and in new construction.
- For use in concrete repairs and in new construction.
- Protective coating to new or freshly prepared steelwork.
- Ideal alternative to zinc rich primers or resin coating systems.

MIXING INSTRUCTIONS

Rockbond Primer for Steel (RB 1.00) powder is mixed with water using a suitable container, a small electric drill, and a ribbon mixer.

- Add 500ml of water to the containers
- Pour 1.25 kg of powder on to the water while mixing
- After all the powder has been added, mix until homogenous
- The Primer is now ready for use.

Alternatively, small amounts of the material can be prepared by slowly adding the powder to a quantity of water and mixing to required consistency.

Remove all rust, scale and corrosion products on the steel surface by abrasive blasting or by wire brushing.

The steel should be free from oil, dust, diesel, loose material or any other surface contaminants.

Mix and paint Primer for Steel (RB 1.00) completely and evenly onto the steel surface to give a cover of not more than 1 mm.

HEALTH AND SAFETY

Primer for Steel (RB 1.00) is non toxic and safe to use. However, use the same precautions as with any cementitious products, wear goggles, protective clothing and a dust mask while mixing and applying the material.

TECHNICAL DATA

TYPICAL DATA for PRIMER FOR STEEL (RB 1.00) at 20°C.

CONSISTENCY: Thixotropic

CONSISTENCY LIFE: 30 Minutes at 20C

SPREAD RATE: 1.25 kg powder treat 1m² of steel surface at 1mm cover.

YIELD: 4 kg punnet treats 3.2m² of steel surface at 1mm cover.

TECHNICAL INFORMATION

Should you have any queries, or require further information, please contact our Technical Sales Team: +64 4 568 5401

ONLINE SUPPORT www.rockbond.co.nz | FREEPHONE 0800 76 25 26 | EMAIL sales@rockbond.

Rockbond SCP Ltd provides the above information in good faith and without warranty. The data represents typical values which can be updated at any time, and this information supersedes previous issues. No liabilities can be accepted for any damage or loss arising from the use of Rockbond SCP Ltd literature or its products, because Rockbond SCP Ltd has no continuous control on how the materials are mixed, placed or cured.

ROCKBOND
MAKING CONCRETE STRONGER